

**UNITED STATES
PATENT AND TRADEMARK OFFICE**



Applicant role in quality: internal quality survey FY 2021 Q2

Martin Rater, Chief Patent Statistician, Statistician Group for Quality
Stefanos Karmis, Director of the Office of Patent Quality Assurance

May 6, 2021

Patent Public Advisory Committee quarterly meeting

UNITED STATES
PATENT AND TRADEMARK OFFICE



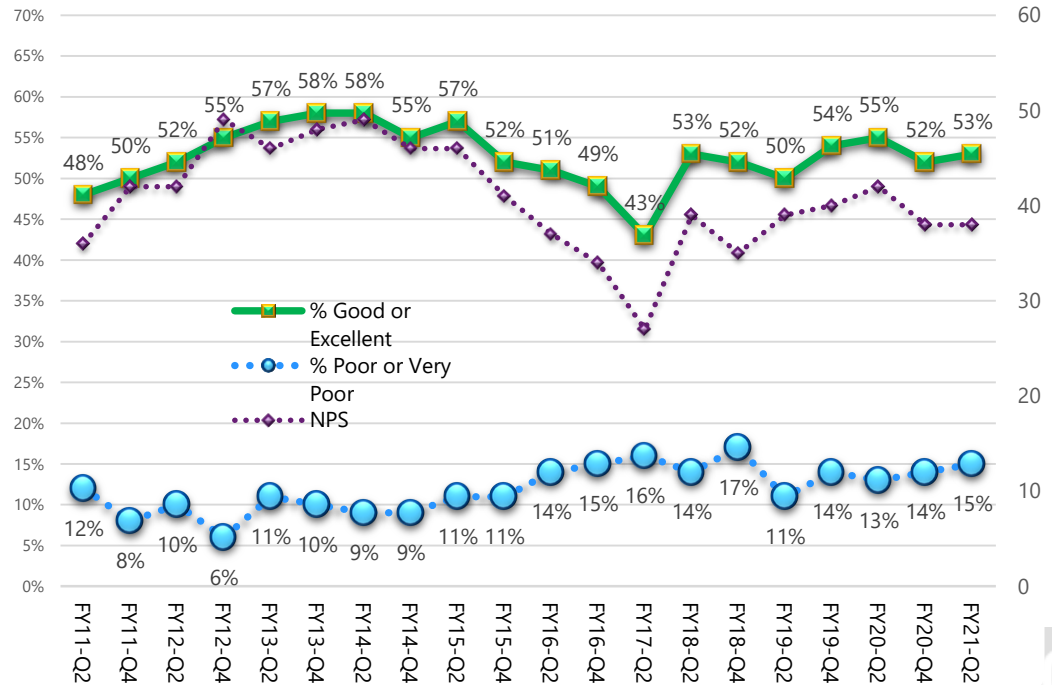
Scope and purpose

- Semi-annual survey to coincide with external quality perception survey
- Administered to random sample of 815 patent examiners covering all technologies and grades
- Assess internal and external factors that impact examiners' ability to provide high-quality patent examination

External factors (overall) net promoter score

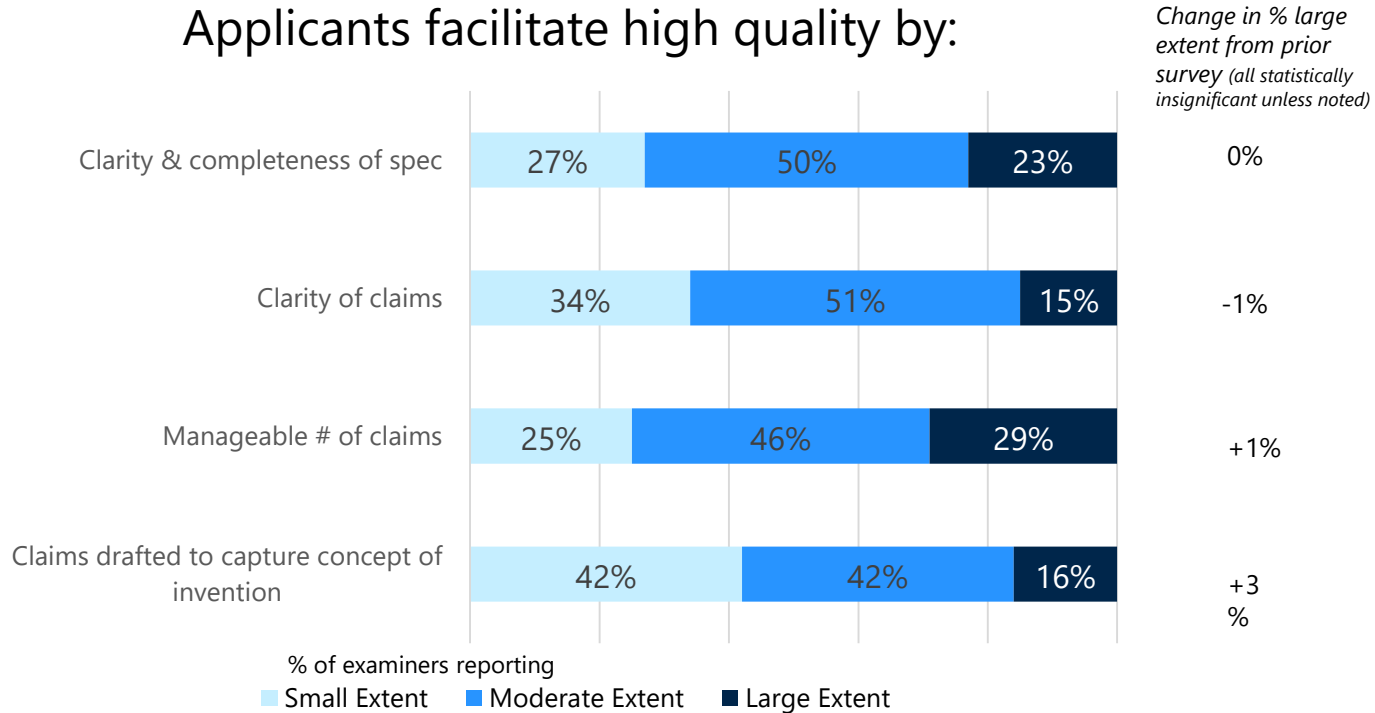
During the past quarter, overall, how would you rate the various external factors (patent applicants/agents/attorneys and their interactions) that impact your ability to provide high-quality patent examination?

	Good or Excellent	Poor or Very Poor	Ratio	Net Promoter Score
FY11-Q2	48%	12%	4.00	36
FY11-Q4	50%	8%	6.25	42
FY12-Q2	52%	10%	5.20	42
FY12-Q4	55%	6%	9.17	49
FY13-Q2	57%	11%	5.18	46
FY13-Q4	58%	10%	5.80	48
FY14-Q2	58%	9%	6.44	49
FY14-Q4	55%	9%	6.11	46
FY15-Q2	57%	11%	5.18	46
FY15-Q4	52%	11%	4.73	41
FY16-Q2	51%	14%	3.64	37
FY16-Q4	49%	15%	3.27	34
FY17-Q2	43%	16%	2.69	27
FY18-Q2	53%	14%	3.79	39
FY18-Q4	52%	17%	3.06	35
FY19-Q2	50%	11%	4.55	39
FY19-Q4	54%	14%	3.86	40
FY20-Q2	55%	13%	4.23	42
FY20-Q4	52%	14%	3.71	38
FY21-Q2	53%	15%	3.53	38



External factors – FY 2021 Q2

Applicants facilitate high quality by:

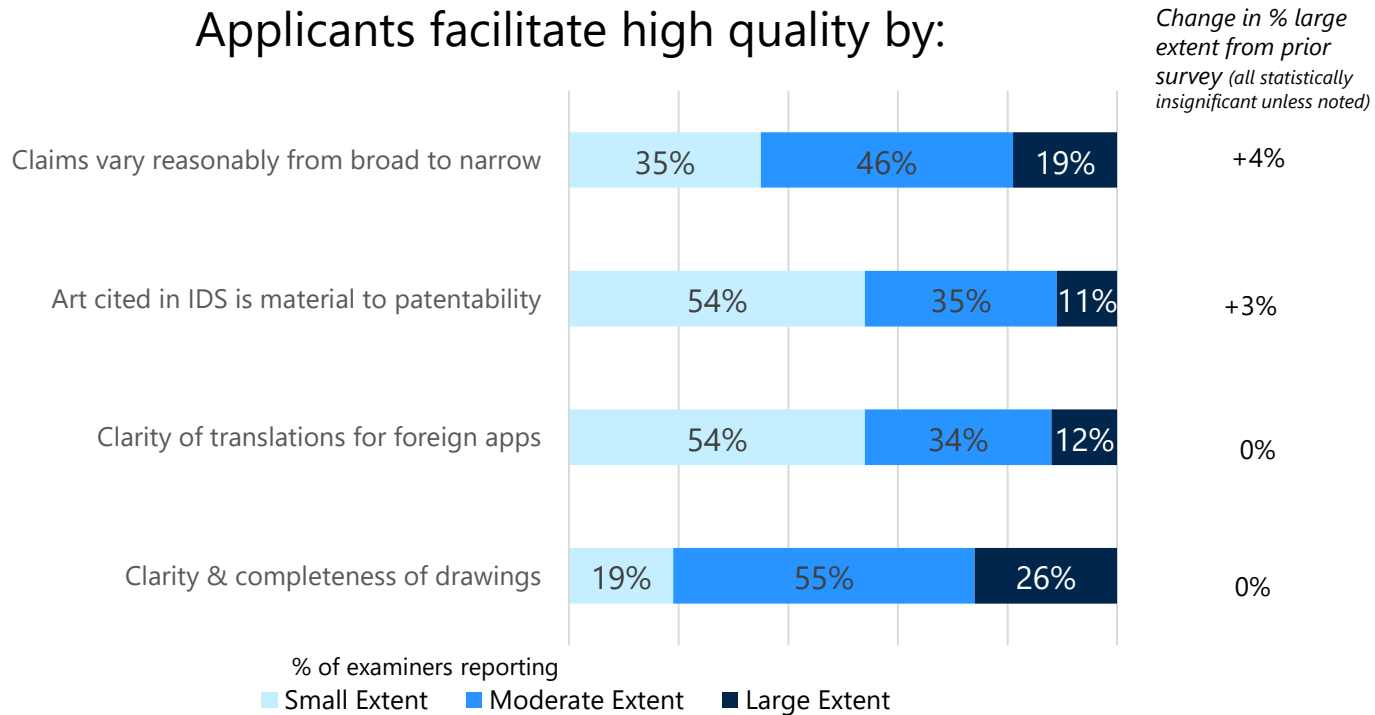


Source: USPTO FY21Q2 Internal Quality Survey



External factors – FY 2021 Q2

Applicants facilitate high quality by:



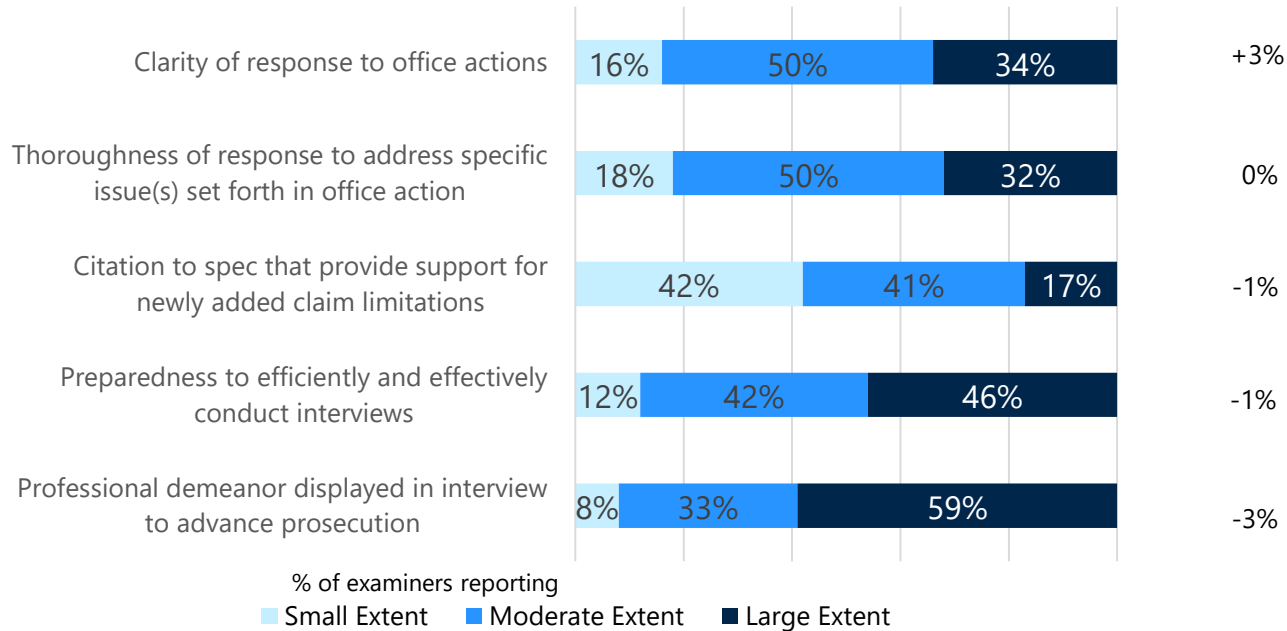
Source: USPTO FY21Q2 Internal Quality Survey



External factors – FY 2021 Q2

Applicants facilitate high quality by:

Change in % large extent from prior survey (all statistically insignificant unless noted)



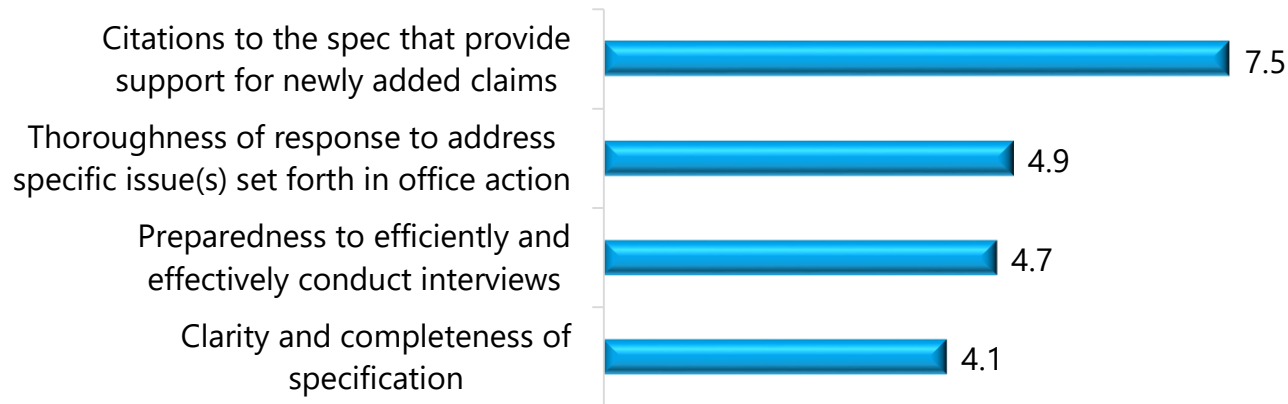
Source: USPTO FY21Q2 Internal Quality Survey



Key drivers

Odds ratio of factors against perception of external quality environment

Citations to the specification that provide support for newly added claims was found to have the highest odds ratio against Overall External Factors that impact the ability of examiners to provide high-quality examination. That is, if a respondent was satisfied with the citations to the specification, the respondent (examiner) is roughly 7 times more likely to rate the overall external factors as good/excellent.



Questions and comments

Martin Rater

Chief Patent Statistician

(571) 272-5966

Martin.Rater@uspto.gov

Stefanos Karmis

Director of the Office of Patent Quality Assurance

(571) 272-6744

Stefanos.Karmis@uspto.gov



